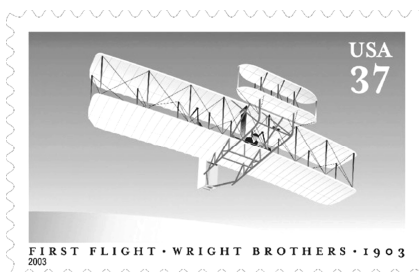




# ROPEX 2005 National Stamp Show

Friday, June 10, 11-6 PM  
Saturday, June 11, 10-5 PM  
Sunday, June 12, 10-4 PM



\*\*\*\*\*  
**Webster Community Field House**  
800 Five Mile Line Road, Webster  
at Webster Thomas High School off the Route 104 Expressway  
Free Admission – Free Parking – Smoke Free  
\*\*\*\*\*

- 32 Dealers from throughout the US and Canada
- Stamps, Covers, Post Cards, Supplies, Coins
- Up to 250 Frames of Exhibits, Daily Seminars
- US Postal Service/UN Postal Administration
- Free Informal Appraisals – Bring Your Items!
- Youth Area (Saturday and Sunday)
- Special Cancels and Cachets

### Honoring Youth

Youth “Champion of Champions”  
Exhibit Competition  
.....

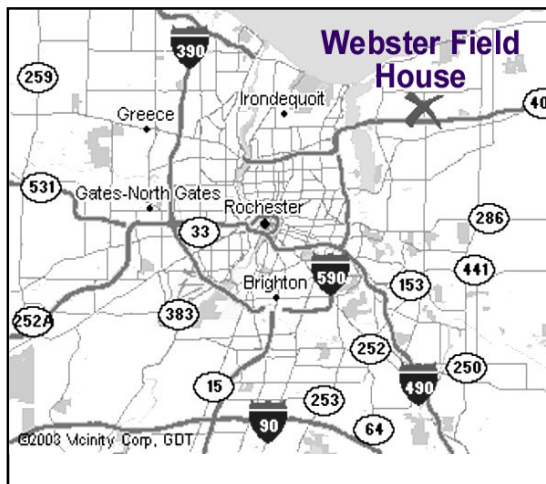
“Stamp Camp USA”, Saturday 10-4  
(reservation and fee required)  
.....

Youth Booth Open All Day Saturday  
and Sunday

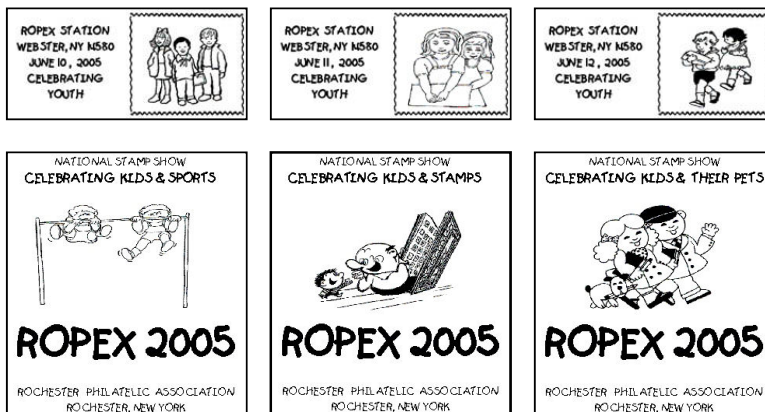
### Special Events:

- > “Early Bird” Bourse - Friday, 9:30-11 AM - \$20 admission
- > “Breakfast at ROPEX” Lecture with Bob Lamb, APS Executive Director  
Saturday before show opening, 9-10 AM (continental breakfast served)
- > Cachet Makers Bourse – Saturday, 2-6 PM in the outer lobby

Easily reached from any part of the Rochester area!



See our cancels and matching cachets! \$2 each, \$5/set of 3  
plus 50 cents/cover to the PO address below.



ROPEX, PO Box 10206, Rochester, NY 14610

Phone (585)266-2524 Web: <http://www.geocities.com/rpastamps/> Email: [stamptmf@frontiernet.net](mailto:stamptmf@frontiernet.net)