

Rochester's Topical Headquarters



ROPEX
Super
Booth
#25

Andy Hale Buys & Sells The World

Belgium • British Commonwealth • Canada
China • France • Germany • Israel • Japan
Korea • Netherlands • United States
Classic U.S. Stamps & Covers • Topicals

We carry a complete line of philatelic supplies.

COUPON COUPON COUPON
Stop and see us at ROPEX
Webster Community Field House, Webster, NY
June 10, 11, 12, 2005
20%
20% off Stamp Supplies
20% off Retail (Not Special Priced Items)
WITH THIS COUPON (Expires Sat. 7/1/05)
McLeod Stamp & Coin Co., Rochester, NY

Store Hours
Tuesday, Thursday, Friday
10:30 am - 6:00 pm
Wednesday
10:30 am - 7:30 pm
Saturday
10:30 am - 3:00 pm
Closed Sunday & Monday

ANDY HALE

McLeod Stamp & Coin Co.

2423 Monroe Avenue, Rochester, NY
Corner of Edgewood & Monroe

No Mail Services Offered



585-244-0240



ROPEX 2005

June 10 - 12, 2005

National Stamp Show
APS World Series of Philately

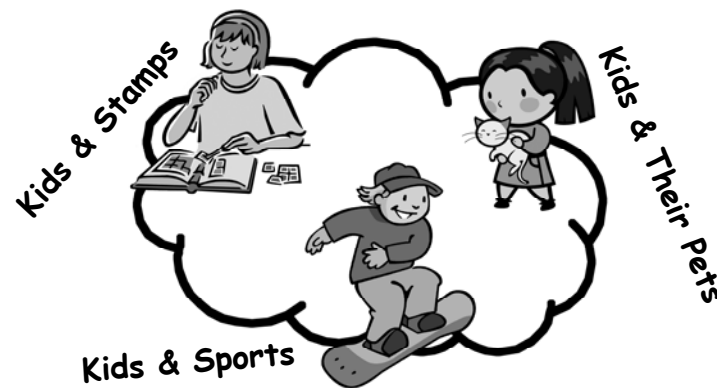
~ ~ ~

2005 AAPE

Youth Champion of Champions

~ ~ ~

Youth Philately



Webster Community Field House
800 Five Mile Line Road
Webster, NY 14580

Presented by the Rochester Philatelic Association, Inc.
P.O. Box 10206 Brighton Station
Rochester, NY 14610-0206
www.geocities.com/rpastamps

Welcome to ROPEX 2005...

You are attending upstate New York's only national stamp show, where the grand award winner of our exhibiting competition goes on to represent ROPEX in the APS "Champion of Champions" competition in August this year in Grand Rapids.

We have our own "Champion of Champions" competition right here, as youth grand champions from across the U.S. and Canada compete at ROPEX 2005 to determine the overall winner. We thank the American Association of Philatelic Exhibitors for sponsoring this yearly event.

As you can see, youth is our theme in 2005. They are our future! We welcome Cheryl Edgcomb, Executive Director of Stamp Camp USA, who is holding a daylong camp here on Saturday. Also, we encourage you to view the creative 3-D youth exhibits on the show floor!

We thank the many dealers who make our show possible. We also thank the U.S. Postal Service and UN Postal Administration for participating. This is the last year two of our long-time friends will be joining us. Bob Scherzi of the USPS and Roger Lyons of the UNPA will be retiring before our next show. Our first "Cachetmakers Bourse" welcomes four dealer-artists Saturday afternoon.

Bob Lamb, APS Executive Director, will give the second annual "Breakfast at ROPEX" presentation, *Some Reflections...*, Saturday morning. You can say hello to Bob and Doris Wilson, APS Webmaster, at the APS table during the show.

At the ROPEX awards banquet Saturday evening, Robbin Dick, author of the *Tips on Types* Washington-Franklin booklets, will discuss how to identify the various types of 1908 — 1923 Washington-Franklin two cent reds.

Joining us again this year is our sister club, the Rochester Numismatic Association. Stamps and coins really do go together, and coins are being sold for the first time at ROPEX this year.

Please feel free to peruse the wonderful exhibits, purchase from our dealers and "kibitz" with your fellow collectors. If you have any questions, don't hesitate to seek out any of our many volunteer show committee members.

- Rick Kase

ROPEX 2005 Committee

Rick Kase - Chairman

Kelly Armstrong · Jim Bell · John Cali · Joseph K. Doles
George T. Fekete · Thomas M. Fortunato · Mary Iman
Carl Miller · Jim Piecuch · Ada M. Prill · Chuck Schultz
Rich Spinelli · Raymond M. Stone · Ann Triggle · Frank Tritto

RPA Officers

President - Paul Gerwitz
Vice President - Mark Hull
Treasurer - Rich Spinelli
Corresponding Secretary - Joe Doles
Recording Secretary - Dave Marcus
Immediate Past President - Jim Piecuch

RPA Board of Governors

Bob Kingston
Term expires June 30, 2005
Chuck Schultz
Term expires June 30, 2006
Raymond M. Stone
Term expires June 30, 2007

Librarian - Joseph K. Doles

RPA Membership Application

Rochester Philatelic Association, Inc.	
Name: _____	<input type="checkbox"/> Adult <input type="checkbox"/> Junior
Street: _____	
City: _____	State: _____ Zip: _____ - _____
Telephone: (____) _____	
Referred By: _____	
APS# _____	ATA# _____ Other _____
Philatelic Interest(s): _____	

Annual Dues

Adult \$20 · Junior \$5

Please enclose your dues and mail to:

RPA Membership Chairperson
P.O. Box 10206
Rochester, NY 14610-0206

www.geocities.com/rpastamps

The Rochester Philatelic Association, Inc.
is a not-for-profit organization, established in 1913.

Meetings are held on 2nd and 4th Thursdays
during the months of September through June.
No meetings are held during July and August.
Regular meeting times are 7:00 pm to 9:30 pm.

Programs start at 7:30 pm.

We meet in the Fellowship Hall of the
Twelve Corners Presbyterian Church located at
1200 South Winton Road in Rochester, NY 14618.

ROPEX 2005 Welcomes & Thanks...

First, a fond farewell...

This will be the last ROPEX for Bob Scherzi, USPS Rochester Customer Relations Coordinator, and Roger Lyons, UNPA Sales Representative. We thank Bob and Roger for their loyal support of ROPEX through the years, and we wish them all the best in their new endeavors. We hope to see them in the future as ROPEX attendees...

Collecting Groups

Rochester Philatelic Association With 140 members, the RPA is upstate New York's largest philatelic society, founded in 1913. (See details and application on Page 23.)

www.geocities.com/rpastamps

American Association of Philatelic Exhibitors The AAPE was formed to share and discuss ideas and techniques to improve standards of exhibit preparation, judging and the management of exhibitions. www.aape.org

American Philatelic Society The APS is the largest stamp group in the U.S., with ~46,000 members worldwide. Members receive the Society's journal, *American Philatelist*, each month and may use the many services or participate in a variety of programs offered by the Society. Executive Director Bob Lamb and Webmaster Doris Wilson will be happy to answer your questions at the Society's table near the entrance. www.stamps.org

Art Cover Exchange The purpose of the ACE is to promote art, philately, friendship and correspondence among its members. The special emphasis of the group is in the artistic presentation of covers for exchange. It is especially active in the Rochester area. www.artcoverexchange.org

Empire State Postal History Society Organized in 1967, the ESPHS is interested in every facet of the postal affairs of New York State, from its colonial roots to modern day. Their quarterly bulletin focuses on Society affairs and their twice yearly journal features extensive articles on New York postal history. www.esphs.org

Federation of Central New York Philatelic Societies Representing over 25 stamp collecting groups from throughout upstate New York, the FCNYPS keeps its members informed of philatelic events through its bi-monthly publication, *Stamp Insider*. www.geocities.com/fcnyps/index.html

Rochester Numismatic Association The RNA has served coin collectors and dealers in Rochester and western New York since 1912. The 100 member RNA meets twice monthly from September through June at the Rochester Museum and Science Center. Their presence at ROPEX is a cooperative venture with the RPA to cross-promote philately and numismatics in our community. An RNA representative at the societies tables near the entrance will be available to answer your questions. www.the-rna.com

United Nations Postal Administration Roger Lyons, the UNPA Sales Representative, will be available to answer your questions at the UNPA table near the entrance. www.un.org/Depts/UNPA

Special thanks to...

Steve Crippé We are grateful to Steve for his generosity to ROPEX 2005. His donations this year will be used as door prizes for some lucky winners. www.stevecrippe.com

United States Postal Service Robert Scherzi is the Rochester Customer Relations Coordinator. www.usps.com

Webster Community Partnership The Partnership manages several facilities on behalf of the Webster Central School District, including the Field House and Aquatic Center. It provides instructional programs in a variety of athletic endeavors available to residents and non-residents alike. We especially want to thank our liaison, Susan Hemingway, for her outstanding support. www.webstercommunitypartnership.org

Webster Athletic Booster Organization WABO is an all-volunteer, all-sports booster group dedicated to the support of interscholastic athletics at Webster Thomas and Webster Schroeder High Schools. Meetings are held the first Monday of every month at Schroeder's Faculty Lounge at 7 pm. www.websterschools.org/groups.cfm?subpage=981

Schedule

All meetings are open to the public.

Friday, June 10

9:30 am - 11:00 am

11:00 am

11:00 am

1:00 pm - 2:00 pm

6:00 pm

Saturday, June 11

9:00 am - 10:00 am

10:00 am

10:00 am - 4:00 pm

11:00 am - 12:00 pm

12:00 pm - 1:30 pm

1:00 pm - 2:00 pm

1:00 pm - 2:00 pm

2:00 pm - 3:00 pm

2:00 pm - 6:00 pm

3:00 pm - 4:30 pm

5:00 pm

6:00 pm

Sunday, June 12

10:00 am

11:00 am - 12:00 pm

12:00 pm - 1:30 pm

1:30 pm - 2:30 pm

4:00 pm

4:00 pm

* Ticket required.

Early Bird Bourse (Open to dealers & collectors.)
\$20.00 entry fee for collectors & non-ROPEX dealers
Welcome and Ribbon Cutting Ceremony [Entrance]
Show Opens
ACE - Art Cover Exchange General Meeting [Public Tables
Near Exhibit Frames]
Show Closes

Breakfast at ROPEX Lecture: Some Reflections...
Bob Lamb, APS Executive Director
Complimentary continental breakfast [Cafeteria]
Show Opens
Stamp Camp USA (Advance registration required.)
Cheryl Edgcomb, Postmaster, Knoxville, PA [Main Hall]
APS Town Meeting [Room 1],
with Bob Lamb, APS Executive Director;
George Fekete, Jack Flannery, Ada Prill & Steve Washburne,
APS Directors
Chapter 53 First Day Cover Society Luncheon [Offsite]
Exhibit Tour [Frame 1]
Empire State Postal History Society Meeting [Room 1]
American Association of Philatelic Exhibitors Seminar [Room 1]
Cachetmakers Bourse [Entrance Hall]
Judges Exhibit Critique [Room 1]
Show Closes
ROPEX Awards Banquet*, with guest speaker
Robbin Dick who will present *The Washington-Franklins Two
Cent Reds 1908 to 1923*
[Bunker's at Shadow Lake, 1850 Five Mile Line Road,
Penfield, NY 14625]
(Cash Bar 6:00 pm; Dinner 6:30 pm)

Show Opens
The Marmalades *Show & Tell* [Room 1]
NY Philatelic Bandits Hootenanny [Room 1]
Federation of Central New York Philatelic Societies Meeting
[Room 1]
Show Closes
Exhibitors' Reception and Exhibit Pickup [Room 1]
Prize Drawings • Youth Activities

Exhibits by Frame Number

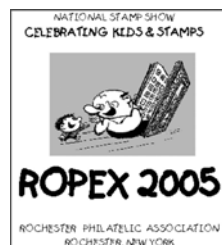
* Rochester Philatelic Association Member

AAPE Youth Championship

- 1 *Youth Championship Biographies*
- 2 - 6 *Birds of Prey*, Tim Hodge [AAPE Youth Championship - Age 13]
Representing COLOPEX - This exhibit shows the many species of birds of prey with general information about each species and a special section on the bald eagle as a symbol.
- 7 - 8 *Birds on Stamps - Their Struggle for Survival*, Maria Hoffman [AAPE Youth Championship - Age 10]
Representing Boxborough Philatelic Show - This exhibit shows how birds' beaks, feathers and habitat are related to their survival.
- 9 - 10 *Central Lithuania*, Dzintars Grinfelds [AAPE Youth Championship - Age 16]
Representing ROPEX - A traditional exhibit depicting the issues, varieties, errors and usages of Central Lithuania.
- 11 - 15 *Wild Cats of the World*, Matthew Padgham [AAPE Youth Championship - Age 15]
Representing Edmonton National Stamp Show - Uses stamps to educate about the plight of wild cats and their place in human culture.
- 16 - 20 *Milestones in the History of Aviation*, James Barron [AAPE Youth Championship - Age 15]
Representing VANPEX - This exhibit presents a wide range of material showing significant events in the history of aviation, as well as local aerophilatelic material of interest to the collector.
- 21 - 25 *Chess: Game of Champions*, Kurt Glatzfelder [AAPE Youth Championship - Age 18]
Representing STAMPSHOW - A chronological look at the champions of the game of chess.
- 26 - 27 *Bon Appetit*, Becca Yahr [AAPE Youth Championship - Age 12]
Representing MILCOPEX - Add philatelic material to food groups and mix in fun facts to get a recipe for an exhibit to whet your appetite! Serves all philatelists.
- 28 - 31 *Sailing Ships*, Chris Hodge [AAPE Youth Championship - Age 11]
Representing VAPEX - This exhibit shows many different types of sailing ships and the ways they have been used throughout history.
- 32 - 33 *Pandas*, Cassi Stahl [AAPE Youth Championship - Age 9]
Representing INDYPEX - This exhibit shows the life of a panda. It describes the panda, what it eats, where it lives and much more.
- 34 - 35 *Puma Concolor*, Sara Henak [AAPE Youth Championship - Age 17]
Representing CHICAGOPEX - An exhibit about cougars: where they live, what they eat and the dangers they face.

ROPEX 2005 Cachets & Cancels

Order Form



Cachet #1



Cachet #2



Cachet #3

Serviced Cachet Covers

\$2.00 Each • Set of Three for \$5.00

Please provide a stamped, self-addressed envelope.

_____ of #1 @ \$2.00 \$ _____

_____ of #2 @ \$2.00 \$ _____

_____ of #3 @ \$2.00 \$ _____

_____ of Set @ \$5.00 \$ _____

Total \$ _____

Please make checks payable to:

ROPEX 2005

P.O. Box 10206

Rochester, NY 14610-0206

Show Cancels

ROPEX STATION
WEBSTER, NY 14580
JUNE 10, 2005
CELEBRATING
YOUTH



ROPEX STATION
WEBSTER, NY 14580
JUNE 11, 2005
CELEBRATING
YOUTH



ROPEX STATION
WEBSTER, NY 14580
JUNE 12, 2005
CELEBRATING
YOUTH



Washington 2006

Will you be going to Washington 2006?

ROPEX is taking a "year off" next year as many ROPEX committee members, fellow RPA members, dealers and some of you — our visitors — will be making plans to attend or participating in Washington 2006. This once-a-decade "Super Bowl" of philately will take place May 27 - June 3 at the Washington DC Convention Center.



There will be something for everyone at the show. Some of the highlights include:

- Well over \$200 million worth of philatelic items on display and for sale on the show floor
- New U.S. stamp Issues and first day of issue ceremonies
- U.S. Postal Service retail station with special daily postmarks and cancellations
- Many foreign government postal stands selling stamps at face value
- New foreign stamp issues and ceremonies
- Autograph sessions
- 150 stamp vendors from over 15 countries selling stamps for pennies up to millions of dollars
- 3,800 competitive exhibit frames (more than 60,000 pages) from collections around the world
- Rarities of the world in hundreds of frames in Court of Honor displays
- Non-competitive exhibition of first day covers
- Philatelic literature competition
- Youth and beginners section
- "What Is It?" booth to answer stamp questions by the general public
- Philatelic society conventions, meetings and seminars
- Special Tours of the Smithsonian's National Postal Museum

It will be eight days of philatelic fun for one and all. Add the "gems of philately" with the treasures of the Smithsonian museums, monuments and all the historical sites of our national Capitol and you have a winning vacation for you and your family.



To learn more, visit the Washington 2006 web site at
www.washington-2006.org

Exhibits by Frame Number

- 36 *Dinosaurs*, Matthew Smith [AAPE Youth Championship - Age 9]
Representing Minnesota Stamp Expo. This exhibit shows when dinosaurs lived, how dinosaurs are classified and examples of dinosaurs in each classification.
- 37 *A Study of the United States 1847 Issue's Usages, Rates, Transportation and Services*, Alexander Haimann [AAPE Youth Championship - Age 18]
Representing March Party - The different usages of the first postage stamps of the United States.
- ROPEX Open Competition
- 38 - 41 *The Vostok Program*, Kurt H. Glatzfelder [Thematic, Youth - Age 18]
The Vostok Program was the first manned space program organized by the Soviet Union. The exhibit contains missions, joint missions and cosmonauts' biographies.
- 42 *Latvian Machine Cancellations: 1920-1944*, Dzintars Grinfelds [Postal, Youth - Age 16]
A postal history exhibit depicting the machine cancellations of Latvia.
- 43 - 45 *Foxes*, Theresa Meehan [Thematic, Youth - Age 20]
The beautiful fox in nature and fables.
- 46 - 50 *Baseball*, Andrew Hodge [Thematic, Youth - Age 10]
A look at baseball, the major leagues and its players as well as other leagues, and its stadiums.
- 51 *Finally! An Explanation of Pokemon*, Dzintars Grinfelds [Display, Youth - Age 16]
A display exhibit meant to give adult viewers a better understanding of the Pokemon World.
- 52 - 57 *The Beleaguered German Mark*, Jeffrey Shapiro [Postal]
Selected examples of covers canceled on the first and last days of the 23 rate periods of the German Inflation (1919-1923).
- 58 *Foreign Air Mail Route and Rate Usages of the United States 30¢ Winged Globe Air Mail Stamp of 1939*, Stephen L. Suffet* [Postal]
Single frame study of the FAM routes and rates of covers bearing one or more copies of this 30¢ stamp.
- 59 - 60 *Identification of the Large Banknote Issues of 1870 to 1890*, Robert Meehan [Postal]
A study of the identification, major varieties and printing methods of the regular issues of the National, Continental and American Banknote Companies.
- 61 - 70 *The United States Large Banknote Issues of 1870 to 1890*, Robert Meehan [Postal]
A study of the domestic, territorial and international uses of the United States Banknote Issues of 1870 to 1890.

Exhibits by Frame Number

- 71 - 73 *One Man's Mail*, Albert Guenzburger* [Postal]
A study of how postal cards were used in commerce by showing examples received by one man.
- 74 - 79 *Imperial Cancels of the Trans-Siberian Railroad, Chelyabinsk to Chita*, Dr. Ed Laveroni [Postal]
Imperial cancels of the Vokzals (large stations), traveling post offices on the trains, and the Stantsiyas (small stations) along the way from Chelyabinsk to Chita.
- 80 *The Pre-Adhesive Cancels of St. Petersburg 1765 - 1859*, Dr. Ed Laveroni [Postal]
The various cancels used in the French, German and Russian language from 1765 - 1859 on letters mailed from St. Petersburg.
- 81 - 90 *Ethiopia 1942 - 1974: The Hailé Selassié Years*, Daryl Reiber [Postal]
This exhibit presents an overview of the stamps and rates that were used during the reign of Hailé Selassié from 1942 to 1974.
- 91 *1919 Hungarian Council Republic Issue*, Fred Fawn [Postal]
A traditional exhibit showing die essays, die and progressive proofs, imperforates, watermarks, shades, all recorded plate varieties, misprints and postal usages.
- 92 - 99 *Canada - Imperial Penny Postage 1898*, Fred Fawn [Postal]
Historical documents, essays, proofs, varieties and postal history. 76 pages contain unique items. Researched areas are documented. Articles and book have been published.
- 100 - 101 *Weird Stuff: Unusual Modern First Day Covers*, Lloyd A. de Vries [Illustrated Mail]
This exhibit, arranged progressively, looks at how variations in stamps, postmarks, sizes and materials can enhance and make special modern first day covers.
- 102 - 110 *The Massachusetts Island Counties*, Douglas N. and Nancy B. Clark* [Postal]
Nantucket, Martha's Vineyard and the Elizabeth Islands postal history before 1890.
- 111 - 115 *The Airpost Issues of Lithuania: A Traditional Study*, Vesma Grinfelds [Postal]
A traditional study of Lithuanian Air Mail Stamps: original drawings, essays, proofs, specimens, errors, varieties and usages.
- 116 - 118 *A Philatelic Ride Around the World Aboard The Iron Horse*, Paul Reino Davis [Thematic]
A topical exhibit showing trains and rail-related items from around the world on stamps, covers and postal cards.

Stamp Camp USA

A Stamp of Approval for Creative Expression



Town Square
created by Al Welch

One of the most rewarding aspects of serving as Stamp Camp USA Executive Director has been the incredible opportunity to observe first-hand the formulation of creative expression as a Stamp Camper begins the three-dimensional stamp exhibit process. For the more than ten years, I have watched children (and adults) walk over to a table covered with assorted craft, artistry, and "toss-away" materials and begin to contemplate how they might work various mismatched pieces into a single theme, and then carefully select stamps that will accent and compliment the overall finished product. You can almost pinpoint the moment at which the exhibitor generates the skeletal idea and begins searching through the array for things that will help transform creation to reality. Once a topic has been selected, a trip to the stamp mixtures table then yields rewards that can be appropriately mounted around, upon, inside or even beneath the finished masterpiece.

As you can see from the illustrations, creative stamp exhibiting can be an unusual approach to philately, but gauging from the number of Campers that have expressed their enthusiasm for such an endeavor, I am convinced that this type of exhibiting has a place in the hobby.

I find most Campers generally fall into one of two categories. The first group tends to enjoy reading, research and literary skills, and therefore favors a more traditional exhibiting approach; the second group, however, often enjoys a more artistic, hands-on approach, and the three-dimensional outlet to generate interest — this group tends to prefer the more unconventional method of stamp exhibiting.



The Stable created by
Tori Leiphart



A Winter Wonderland
created by Elizabeth
Welch

Several years ago I worked with a Camper whose preference was artistic expression rather than writing and researching (mainly due to reading comprehension struggles the youngster was experiencing). When James entered the Stamp Camp setting, he looked me squarely in the eye and said, "I don't want to be here ... I'm only here because she's (pointing to his guardian) making me!" I thought, "this should be an interesting experience for both of us..." Much to my pleasure, however, by the end of Camp, James was proudly smiling when he was called forward to be recognized for his first-place, prize-winning creative 3-D stamp exhibit. Though James struggled somewhat doing research, his individual talents were best utilized and appreciated when he constructed a unique exhibit of a bank-teller machine that converted into a robot! I haven't seen another three-dimensional stamp exhibit like it, and I will never forget the look of accomplishment on James' face when I asked him if there was anything about Stamp Camp that he enjoyed. He impishly grinned at me and said, "yeah, that creative exhibit stuff was pretty cool!" I knew then that we'd touched one more youngster for the hobby of stamp collecting.

- Cheryl B. Edgcomb
e-mail stampcampusa@intergate.com

Young Stamp Collectors of America

Buzz, buzz, buzz. Have you heard the growing choir, chattering about Young Stamp Collectors of America? This newest division of the APS is bringing the joys of stamp collecting to young people up to age 18 with a program that's fun, challenging, and guaranteed to enhance their collecting enjoyment.



Design A Stamp

To date YSCA has embraced more than 100 members, with experience levels ranging from beginning collectors to those who have collected for several years. And we're looking for you to help YSCA share our passion for philately.

So what's all the excitement about? First, there's philatelic treasures for new members — a membership card, a packet of stamps, and a first day cover. In addition, YSCA entices new members to get involved with electronic and live meetings.

E-meetings, courtesy of the Virtual Stamp Club at www.virtualstampclub.com, are held on the first Sunday of each month. These get-togethers provide a forum for young members to meet other collectors, ask questions and talk about their collections. In recent months we've talked about new stamp issues, where to find stamps, contests and what is a first day cover. At the May meeting, first day cover designer Helen Fowler served as the featured guest, answering questions about how to create cachets for covers.

Live member meetings, held twice a year at APS StampShow and the APS Winter Show, engage young people in hands-on activities, and give them a sense of belonging to a larger philatelic family. The highlight of the first meeting in Atlanta in February was a visit by renowned philatelic artist, Chris Calle.

Members also enjoy a quarterly e-newsletter, contests, pen pal service, online support via e-mail and discounted prices on selected collecting supplies.



Scavenger Hunt

Would you like to share YSCA with the young people in your community? Consider a gift membership - open to any person of good character, under age 18, at \$10 per person per year. Family memberships are available for two or more youths in the same household for \$15 per year. Scholarship donations welcome!



Janet Houser with YSCA member, son Zach.

YSCA also welcomes you to join, as Adult Supporting Members. This category is open to those interested in showing their support for youth philately, at an annual rate of just \$20 per person. So get involved, become a supporting member and share your passion for the hobby. We welcome your advice, financial and in-kind donations, and willingness to participate in volunteer opportunities at the American Philatelic Center and / or at the APS annual StampShow and Winter Show.

- Janet Houser

For information regarding the YSCA, please contact Janet Houser, Youth Coordinator
100 Match Factory Place, Bellefonte, PA 16823
e-mail ysca@stamps.org • phone (814)933-3820

Exhibits by Frame Number

- 119 - 125 *3¢ Handcar - Rochester's First Transportation Coil*, Raymond M. Stone* [Illustrated Mail]
A first day cover exhibit displaying a variety of cachets and stamp combinations for this definitive issue.
- 126 - 130 *Corning, NY Postal History*, Alan Parsons* [Postal]
An examination of mail handling from 1834 to date in the area now covered by the Corning, NY post office.
- 131 - 140 *The Government Post Office in New York City: 1842 to 1900*, Daniel A. Brouillette [Postal]
A study of the Federal Mails starting in 1842 to the end of the 19th Century. The cancellations, special services and specialized studies.
- 141 - 150 *UK Trans-Atlantic Mail: The 1s3d (15 pence) Rate with Multiples and Variations*, David A. Cooper, Sr. [Postal]
The UK Trans-Atlantic 1s3d (15 pence) rate came into effect on May 30, 1939. There was no single stamp for this rate until June 3, 1953.
- 151 *Northbound by Air: U.S. Air Mail Rates to Canada, 1920 - 1948*, Stephen L. Suffet* [Postal]
Single frame study of U.S. air mail rates to Canada.
- 152 - 156 *British Palestine, 1917-1920*, Jonathan W. Becker [Postal]
This exhibit shows postal history in the military occupation period. Featured are military and early civilian uses of APOs, prepaid mail and reintroduced Turkish devices.
- 157 - 161 *The Olive: Olea Europaea*, Vincent De Luca [Thematic]
Mythology and history introduce the origin and evolution of the olive tree, its many uses and symbols, and its essential relation to man.
- 162 - 166 *The World Cup of Soccer*, Richard Woodward [Thematic]
A philatelic review of the history and play of the World Cup from inception in 1930 to 1990.
- 167 - 169 *Falkland Islands - War and Aftermath*, Mark A. Butterline [Postal]
Postal history related to the 1982 Falklands War and its aftermath.
- 170 *Pitcairn Islands First Definitive Series Postal History*, Mark A. Butterline [Postal]
Rates, routes and usages associated with the KGVI definitive series.
- 171 - 180 *The Allied Intervention in Russia 1918 - 1925*, Alfred Kugel [Postal]
Mail from the Intervention Forces that were sent to North Russia, Siberia and South Russia at the end of World War I.
- 181 - 189 *Canada 1927 Historical and Confederation Anniversary Issues*, Kimber A. Wald [Postal]
A presentation of the two issues. An essay, proofs, mint, used, varieties, marginal inscriptions and covers are shown. Rate schedules (excluding airmail) are presented.

Exhibits by Frame Number

- 190 *World War II and Nauru*, Robert C. Stein [Postal]
A history of the Nauru mails between September 1939 and December 1945.
- 191 - 199 *Spanish Postal History: A General Overview 1811 - 1880*, Donald Schurr* [Postal]
Tracing the evolution of the Spanish postal system over 70 years through covers showing various postal markings, cancellations and stamps.
- 200 *The Official Seals of Egypt*, James Kotanchic [Postal]
A complete coverage of Egyptian official seals and their usage from their introduction in 1906 through modern times.
- 201 - 210 *100 Years of U.S. Official Seals*, James Kotanchic [Postal]
Official seals proofs, essays, varieties and usages from 1872 through 1972, including the typeset seal issues.
- 211 - 218 *Irish History Through The Post: 1800 - 2000*, George Nicholson [Display]
Postal and related items are used to provide an outline of two centuries of Irish history from the Act of Union to the Millennium.
- 219 - 222 *Switzerland: Willi's Long Awaited Adventure*, Heinz Glatzfelder [Display]
This is the story of a Canadian-born Swiss boy named Willi who travels through the 23 Swiss cantons with his father.
- 223 *Canine Heroes - Space Dogs*, David Schue [Thematic]
Russian space dogs, the Sputnik program and stamps with stories.
- 224 *Indian One-Quarter Anna Postcard of 1902*, Steven Zwillinger [Postal]
The exhibit shows the Edwardian single Quarter-Anna postcard, the overprints for use by Convention States and selected usages in India proper.
- 225 - 232 *U.S. Third Class Mail: the First 100 Years, 1863 - 1963*, Stephen L. Suffet* [Postal]
This exhibit documents the development of third class mail as a class of U.S. domestic mail service.
- 233 - 236 *Woldenburg POW Camp*, Raymond M. Stone* [Postal]
Stamps designed and printed by Polish POWs with the approval of German prison authorities to facilitate communications within the large Woldenburg POW camp.
- 237 *The World of Faux Philatelica*, American Philatelic Society [Non-Competitive]
A frame of counterfeits and forgeries, from the APS reference collection, advertising the next U.S. international stamp show, Washington 2006, in Washington D.C on May 27 - June 3.
- 238 *Washington 2006*, Washington 2006 Committee [Non-Competitive]
Promotional information about Washington 2006.

AAPE Youth Champion of Champions

Once a year, the American Association of Philatelic Exhibitors sponsors a youth exhibition featuring the work of outstanding young philatelists in the U.S. and Canada. Each participant has won a youth grand award at a nationally accredited show, as listed, in the United States or Canada, with at least a national level silver medal. This year ROPEX is host to thirty-six frames of exhibits, by a dozen youths ranging in age from 9 to 18.



YCC Co-Directors Carol and Bob Barr with, from left, Andrew, Chris and Tim Hodge at the 2004 YCC at INDYPEX. Chris and Tim are 2005 Champions.

The competition rotates among a number of summertime WSP shows including NAPEX, NTSS, ARIPEX and others. It is scheduled to return to INDYPEX in 2006.

The program is underwritten by the American Association of Philatelic Exhibitors and a grant from the World Columbian Exposition. Several organizations and a number of individuals have graciously donated awards to encourage our aspiring youth exhibitors. We are grateful for the willing support of each one.

The championship was started by the late Mike Jolly and was more recently directed by Ada Prill. Carol and Robert Barr are the current directors. They became interested in the program during the years that their daughter Tabitha (now 21) was an exhibitor; she participated in the program for three years.

In addition to the Grand Award, a number of other awards, certificates, and ribbons will be presented; these have been donated by various societies and individuals. Each participant will also receive a Fran Jennings medal from the Postal History Foundation and a membership in Young Stamp Collectors of America, the new club sponsored by the American Philatelic Society for young people interested in this fascinating hobby.

We invite you to see the outstanding work these young exhibitors have produced. In Frame Number One you will find photos and short biographies of the participants. Most of them are excellent students, and they are active in a wide variety of other interests — sports, chess, community service, scouts and church. Some share their love of stamp collecting with other family members and, in fact, three of the exhibits in the open competition at ROPEX are by supportive members of the families of these young champions.



Dzintars Grinfelds, 2003 Youth Champion of Champions, and Youth Champion Tabitha Barr with then YCC Director Ada Prill, center, at the 2003 YCC at NAPEX.

A panel of three nationally accredited judges — Thomas M. Fortunato, Kenneth P. Martin and Stephen L. Suffet — will choose the winner of the Youth Championship, the best youth exhibit in the U.S. and Canada for 2004-2005, as well as the special awards. These hard-working judges serve without compensation — we owe them an enormous debt of gratitude!

- Carol Barr
e-mail carolschamps@yahoo.com

Cachetmakers

CL Cachets - Table A

U.S. FDCs
PO Box 2053
Elkton, MD 21922-2053
(330)499-3625
clazfdc@yahoo.com

Dragon Cards - Table D

Unusual U.S. first day cover cards since
1983
PO Box 561
Paramus, NJ 07653-0561
(201)251-4235
dragoncards@pobox.com

Homespun Cachets - Table B

U.S. FDCs
PO Box 49376
Algood, TN 38506-0376
(931)537-6970
homespun@multipro.com

Junction Cachets by Lonegoat - Table C

U.S. FDCs, event covers, pictorial cancels
PO Box 185
Bel Air, MD 21014
(410)588-5972
lonegoatjunction@msn.com

In Memoriam

The Rochester Philatelic Association and the ROPEX committee were saddened by the April 19 death of Don Schleining. Don and his wife Marge, although residents of West Seneca (near Buffalo), often attended RPA meetings and worked long hours to make ROPEX successful. They gave a warm welcome to ROPEX attendees at the Hospitality Room at our former location and, after the show moved to its present site, Don continued to greet ROPEX visitors, handing out programs at the door. Don had a rare ability to make people laugh. It was usually easy to find Don during show setup — just follow the sounds of guffaws.

A stamp collector since childhood, Don had a special interest in Scouts on stamps. He also maintained a worldwide collection and collections of U.S. stamps, plate blocks and first day covers. In addition to RPA, Don was active in the Buffalo Stamp Club and the Lockport Coin and Stamp Club.

Don is pictured in the photo below receiving, with Marge, the Fred L. Koeppe Memorial Trophy for service to the Buffalo Stamp Club from Bob Meegan, left, and Walter Orton III, right.



Photo courtesy of Alan Parsons.

We will greatly miss Don — our condolences to Marge and the rest of the Schleining family.

Juries

ROPEX is pleased to welcome two talented groups of judges for its juries this year.

ROPEX Open Competition Jury

Dr. Stephen Washburne, Jury Chairman (Philadelphia, PA)

Steve has been an accredited judge since 1988 and his interests are broad. His specialties range from Portugal and Spain to postal stationery to RPOs to thematics and display. Steve is actively involved with PNSE (Philadelphia National Stamp Exhibition). He has supported our show in the past by exhibiting and judging, and we welcome him in 2005.

Thomas F. Allen (Cleveland, OH)

Tom's primary expertise is in U.S. postal history. His home is Cleveland, Ohio and he is an active member of the Garfield Perry March Party committee. We were fortunate that Tom took his first apprenticeship here at ROPEX 2000 and has been a ROPEX exhibitor many times.

Ken Martin (State College, PA)

Ken is one of the busiest people in philately. He is the Director of Shows and Exhibitions for APS. ROPEX 2005 is very fortunate that he has the time to be with us this year. Ken's judging strengths are not only in thematics, but also in modern U.S. postal history, youth and illustrated mail.

Greg Pope (Austin, TX)

Greg was accredited as a judge last year but already he is judging as a veteran. He will be coming to us from Austin, Texas, the longest journey of any of the judges. Greg is an active exhibitor of Australia and is very knowledgeable of British Commonwealth material.

Dominick Riccio (New York, NY)

This will be Dominick's first visit to ROPEX. His home is New York City, so Rochester is not too far for him to travel. Dominick's specialties are varied, ranging from Eastern Europe, in particular Czechoslovakia and the Ukraine, to Ireland and to U.S. Revenues. We welcome him.

AAPE Champion of Champions Jury

Thomas M. Fortunato (Rochester, NY)

Tom Fortunato is an exhibitor and nationally accredited judge by the APS and ATA. He is a former recording secretary, vice president and president of the RPA, as well as former ROPEX chairman. His interests include general worldwide collecting, thematics including ceramics and glass, and postcards otherwise known as "Dear Doctor" cards that advertised various drugs to doctors in the 1950s and 1960s.

Ken Martin (State College, PA)

Ken is a member of both ROPEX juries this year, clear evidence supporting the observation above that he is one of the busiest people in philately!

Stephen L. Suffet (Sunnyside, NY)

Steve is an RPA member who lives in New York City. An APS accredited judge, Steve has won numerous philatelic honors, including a grand award, with his exhibits of U.S. postal history. Steve also has a thematic exhibit honoring fellow folk singer Woody Guthrie. He has been an exhibitor or judge at ROPEX every year since 1993.

Awards

ROPEX Open Competition

Grand Champion - Winner represents ROPEX at STAMPSHOW 2005 in Grand Rapids, MI [Inlaid Wooden Tea Chest]

Reserve Grand Champion - Second Best in Show [Outdoor Clock & Thermometer Plaque]

Single Frame Grand Champion - Winner represents ROPEX at AmeriStamp Expo 2006 in Toronto, ON [Designer Art Glass Plate]

Rochester Philatelic Association

- Larry R. Moriarty Sr. Memorial Award - **Youth Grand Champion** [Miniature Silver Clock]
- Andy Hale Award - Excellence in a Non-Postal History Exhibit by an RPA Member [Collector's Magnifier]
- Dusty Miller Award - Excellence in a Postal History Exhibit by an RPA Member [Cyclist Solar Lamp]
- LRM Popularity Award - Most Popular as Voted by ROPEX Attendees [Plaque] (Winner will be decided on Sunday at the close of the show.)
- Youth 3-D Exhibit Best in Show [Crystal Paperweight]

American Association of Philatelic Exhibitors

- Award of Honor - Excellence in Presentation Not Winning a Gold Medal [Cloisonné Pin]
- Award of Honor - Excellence in Presentation Not Winning a Gold Medal [Cloisonné Pin]
- Creativity in Philatelic Exhibiting Award [Gold Pin]
- **AAPE Youth Grand Champion** - Winner Enters AAPE's Youth "Champion of Champions" Competition [Certificate & Ribbon]
- Novice Award - Best Exhibit of a First Time Exhibitor [AAPE Year Membership and Exhibiting Book]

American First Day Cover Society

- Best Exhibit of First Day Covers [Plaque & Certificate]

American Philatelic Congress

- Excellence in Written Text in an Exhibit [Congress Book]

American Philatelic Society

- Medal and Ribbon of Excellence - Pre-1900 Material
- Medal and Ribbon of Excellence - 1900-1940 Material
- Medal and Ribbon of Excellence - 1940-1980 Material
- Medal and Ribbon of Excellence - Post-1980 Material
- Medal and Ribbon for Research Excellence

American Topical Association

- First Place Award Earning a National Bronze or Higher [Medal & Ribbon]
- Second Place Award [Medal & Ribbon]
- Third Place Award [Medal & Ribbon]
- One Frame Merit Award [Ribbon]

Auxiliary Markings Club

- Award of Merit [Certificate]

British North America Philatelic Society

- Best British North America Exhibit [Ribbon]

Dealers

Steve Malack Stamps - Table 9

U.S. stamps
PO Box 5628
Endicott, NY 13763
(607)862-9441
malackweb@aol.com

McLeod Stamp & Coin Co. - Table 25

U.S. and worldwide stamps, supplies
2423 Monroe Avenue
Rochester, NY 14618
(585)244-0240
jkellas3@rochester.infionline.net

John Nunes - Table 26

U.S. and worldwide covers, ephemera
80 Fredericks Road
Scotia, NY 12302
(518)399-8395
nunesnook@aol.com

Pack-Rat Covers - Table 22

U.S. covers (military, navy, topicals), FDCs, 25 cent boxes
PO Box 512
Oshtemo, MI 49077-0512

Robert Patkin - Table 5

U.S. and worldwide postal history, ACE covers
PO Box 186
Georgetown, MA 01833
(800)222-7184
bpat@shore.net

Phantom Stamps, Coins & Supplies - Table 20

U.S. and worldwide stamps, covers, topicals, supplies
PO Box 395
Manchester, NY 14504
(585)289-9365
sawyer2pid@juno.com

Queen City Coins & Stamps - Table 14

U.S. / worldwide new issues, British Commonwealth, topicals
PO Box 141
Lafayette, GA 30728
(706)638-2941
queenlouise@cs.com

J. Reeves & Company - Table 19

U.S. and worldwide covers, FDCs
PO Box 407
Huntingdon, PA 16652
(814)643-5427
jreevesandcompany@hotmail.com

Les Rosen Dollar Covers - Table DD1

U.S. and worldwide FDCs, stamps
7724 Matchwood Lane
Liverpool, NY 13090
(315)652-9635
fdcsrfun@aol.com

RPA Ten Cent Stamps - Table 4

Worldwide stamps at 10 cents each
Rochester Philatelic Association

Robert C. Swed - Table 10

U.S. used stamps and covers, classic FDCs
1204 Elderon Drive
Wilmington, DE 19808
(302)994-6086

Mark Szuba - Table 18

U.S. and worldwide stamps, postcards, lots
PO Box 3532
Syracuse, NY 13220-3532
(315)345-4115
merristamp@aol.com

Doug Weisz U.S. Covers - Table 15

U.S. covers (FDCs, naval, flights, events)
PO Box 1458
McMurray, PA 15317
(773)914-4332
weiszcovers@ameritech.net

Whit's Covers - Table 1

U.S. plate blocks, first days / event covers, miscellaneous
34 Red Cedar Lane
Shelburne, VT 05482
(802)985-8519
whits@sover.net

Laurence L. Winum - Table 23

U.S. and Germany, stamps and covers
PO Box 247
Walden, NY 12586
(800)914-8090
winum@frontiernet.net

Dealers

1840 - 1950 Mostly Stamps (formerly Hampshire Stamps) - Table 11

U.S., British Empire and worldwide stamps, covers, lots
PO Box 423
Milford, NH 03055-0423
(603)673-7180
hstamps@jlc.net

Dave Allego - Table 24

Worldwide covers, cinderellas, ephemera
648 Merchant Street
Ambridge, PA 15003
(724)266-4237
allego1@comcast.net

Bardo Stamps - Table 16

U.S. stamps (#1 to date)
PO Box 7437
Buffalo Grove, IL 60089-7437
(847)634-2676
jfb7437@aol.com

Tom Baron Stamp Company - Table 12

U.S. postal history, FDCs, naval covers
PO Box 1339
Long Beach, NY 11561-1339
(516)763-9205
tomcovers@aol.com

Biddle Philatelic Company - Table 27

Worldwide stamps, covers, cinderellas, postcards
PO Box 934
Buffalo, NY 14220-0934
(716)828-1375
blbiddle@aol.com

Britannia Enterprises - Table 6

Worldwide covers, cinderellas, ephemera
PO Box 2114
Orleans, MA 02653
(508)240-0799
meadbritannia@aol.com

The Cover Connection Dollar Covers - Table DD2

Covers
PO Box 173 Niagara Station
Buffalo, NY 14201-0173
(716)854-0222
coverconnection@aol.com

EveryThingValuable - Table 29

Worldwide covers and postal history
365 Hurstbourne Road
Rochester, NY 14609
(585)314-1240
unpub@aol.com

Friedman's Cover Corner - Table 17

Worldwide covers and postal history, U.S. patriotics
PO Box 300459
Arlington, TX 76007-0459
(817)467-1841
covercncr@eaze.net

Geezer's Tweezers - Table 28

U.S. and worldwide covers, FDCs, lots
PO Box 65010
Baltimore, MD 21209-5010
(410)602-9030
philwb4fdt@hotmail.com

Al Greco Stamps - Table 21

U.S. and worldwide stamps, covers, and postcards
1190 Nolan Road
Macedon, NY 14502
(315)986-7948
agreco@agopen.com

William H. Hatton - Table 8

U.S. stamps, U.S. and worldwide covers, picture postcards, literature
PO Box 622
Piqua, OH 45356-0622
(937)778-9206

JWF Stamps - Table 13

Postal history of U.S., Canada, Germany, Great Britain, Russia
PO Box 1875
Bloomington, IN 47402-1875
(812)336-8387
faber@bluemarble.net

Lakewood Stamps - Table 7

U.S. and topical new issue stamps (including Disney, WWF)
1656 W 40th Street
Erie, PA 16509
(814)866-0352
res106@aol.com

Awards

Empire State Postal History Society

- Best New York State Postal History Exhibit Earning a Vermeil or Higher [Large Waterford *Metropolitan* Clock]
- Certificate of Participation for New York State Postal History Exhibits

Postal History Society

- Best Exhibit of Postal History Earning a National Vermeil or Gold (Medal)

Rossica Society

- Best Exhibit of Postal History of Russia [Plaque & Ribbon]

United States Philatelic Classics Society

- Best U.S. Exhibit up to the First Bureau Issue of 1894 Earning a National Vermeil or Gold and Not Winning this Award in the Previous 24 Month Period [Gold Medal]

United States Stamp Society Statue of Freedom

- Statue of Freedom Award - Best U.S. Exhibit from 1894 Onward [Medal]
AAPE Youth Champion of Champions

☞ All exhibitors receive Fran Jennings Medals, membership in YSCA, participation certificates & ribbons.

Youth Champion of Champions (Donated by WESTPEX)

- Best youth exhibit shown in North America in 2004-2005. [\$100 Prize, Ribbon & Framed Stamp Display]
- Winner also receives the Ralph Herdenberg Award [Stockbook]

American Philatelic Society Membership Award (Donated by Ken Martin) [1 Year Membership]

American Topical Association

- Youth Award - Best Topical / Thematic Exhibit [Medal & Ribbon]
- Membership Award (Donated by Johnstown Junior Stamp Club) [1 year Membership]

Howard Hotchner Award (Donated by John Hotchner) - Best Portrayal of American or Canadian History [\$50 & Certificate]

International Society of Worldwide Stamp Collectors Award - Best Use of Worldwide Material [\$50 & Certificate]

Liberty Award (Donated by C. David Eeles) - Best "Traditional" Form Exhibit [\$50 & Certificate]

NAPEX Awards

- Title Page Award [\$50 & Certificate]
- Creativity Award [\$50 & Certificate]
- Topical Award [\$50 & Certificate]
- Thematic Award [\$50 & Certificate]
- Research Award [\$50 & Certificate]

Potentiality Award - One Each for Pre-Teen Boy and Girl (Donated by Pinnacle Stamp Club, Little Rock, AR) [\$50 & Certificate]

Unique Girl's Award (Donated by Sandy Morris) [\$20.05 'Current Year' Value & Certificate]

Welsh Philatelic Society Postal History Award (Donated by Ann Trigg on Behalf of the Welsh Philatelic Society) - Best Postal History Exhibit [\$50 & Certificate]

WESTPEX Awards

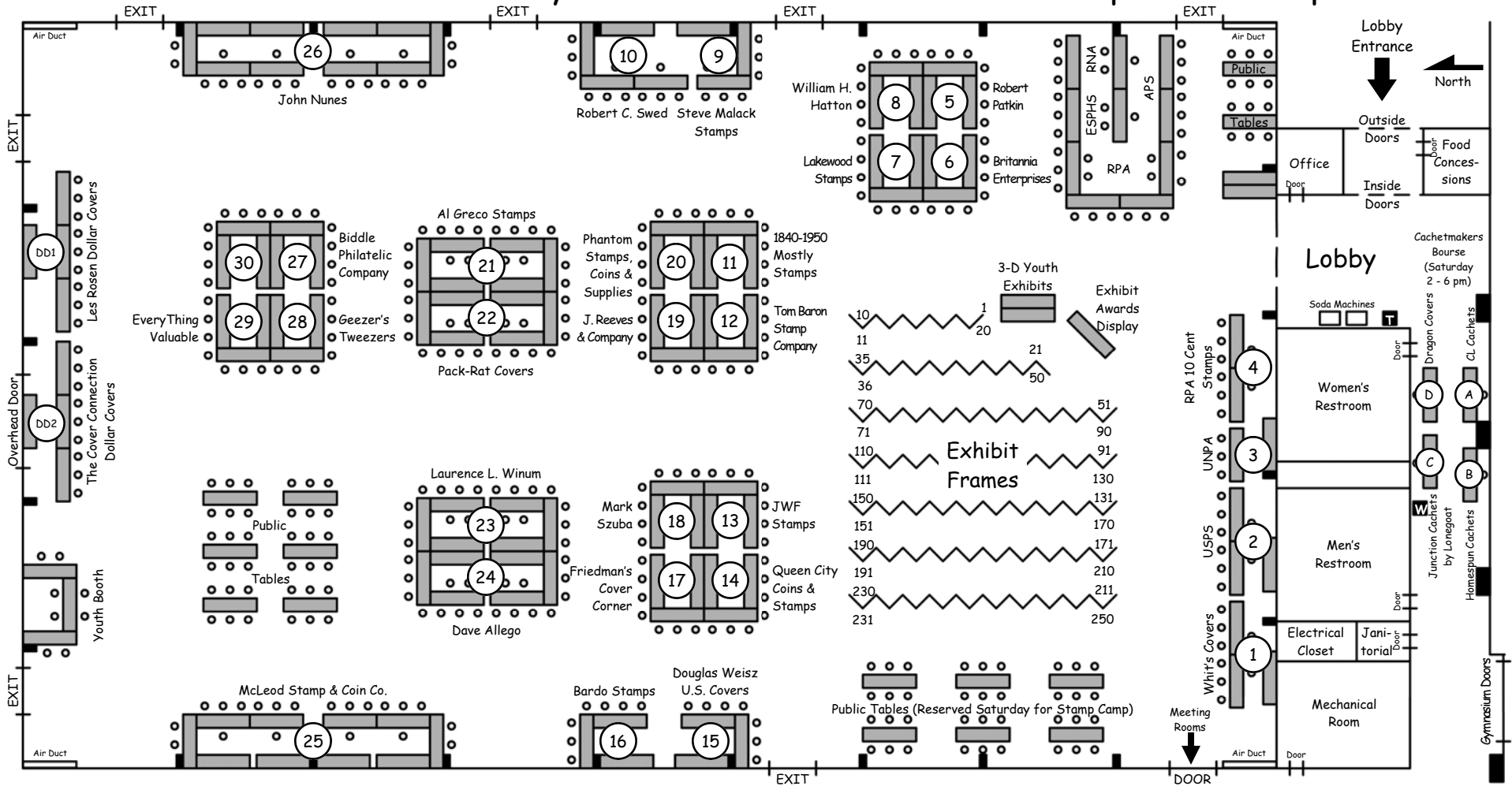
- Write-Up Award [\$50 & Certificate]
- Flora and Fauna Award [\$50 & Certificate]
- Award of Excellence [\$50 & Certificate]



The Jury will not give certain awards if no entries qualify; other awards not listed may be awarded at the discretion of the Jury, with the consent of the ROPEX Committee.

Floor Plan ROPEX 2005

A World Series of Philately Show • 2005 AAPE Youth Champion of Champions



Future ROPEX Dates

2006 - no ROPEX due to Washington 2006

*June 2007 - TBA

* The ROPEX website will be updated when the dates are confirmed.

www.geocities.com/rpastamps/ropex.html

Legend

T Telephone

W Water Fountain

8' x 2' Table

Notes