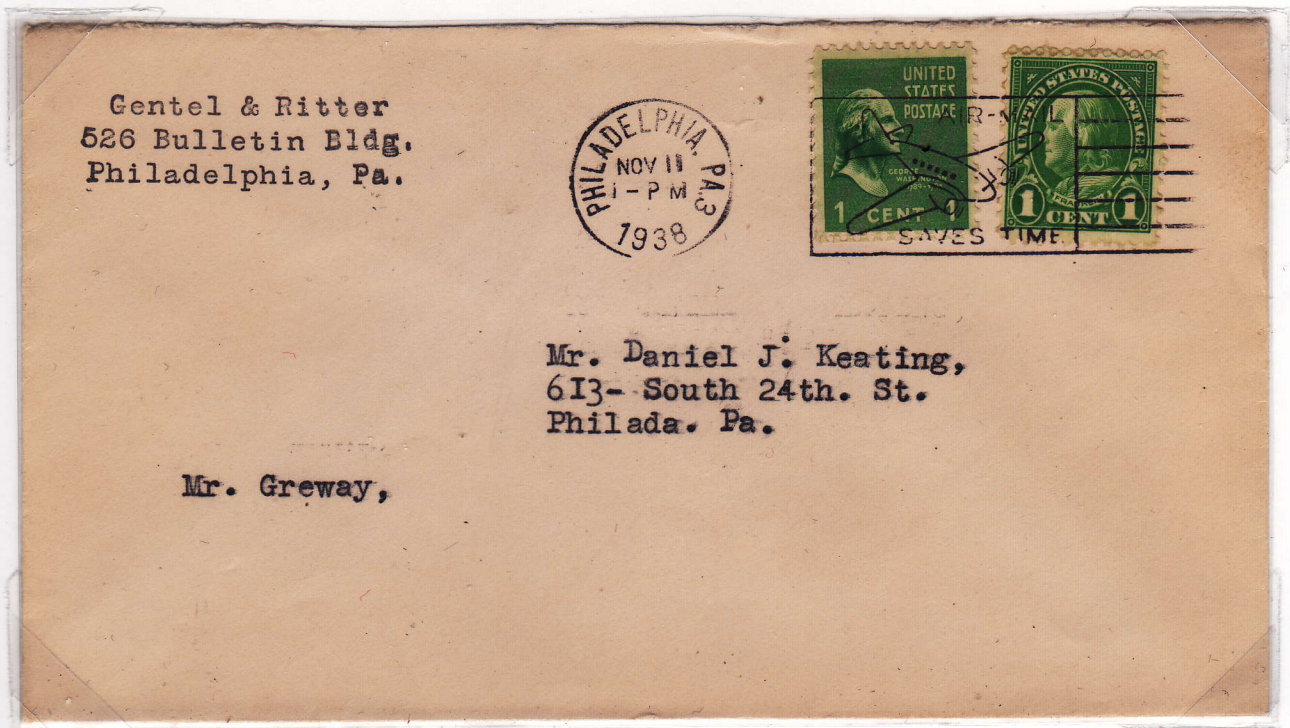


# RATES AND USAGES OF THE UNITED STATES ONE CENT PRESIDENTIAL SERIES STAMP: 1938-1958



Transitional usage: The new 1¢ Presidential Series stamp and the old 1¢ stamp from the Fourth Bureau Issue team up to pay the 2¢ per ounce local first class letter rate. 1938.

This exhibit documents the basic United States postal rate structure during the period that the Presidential Series of 1938, commonly called the Prexies among philatelists, was in current use. In doing so, it follows the general structure of three classic gold medal Presidential Series postal history exhibits, those of Roland Rustad, Randy Neil, and Stephen Suffet. However, it adds this new challenge: **Each item in the exhibit bears one or more stamps of the 1¢ value.**

The 1¢ Prexie was issued as a sheet stamp on April 25, 1938, as a horizontal coil on January 20, 1939, and as a vertical coil and in booklet panes on January 27, 1939. The Post Office Department issued a new 1¢ definitive stamp in 1954. However, some 1¢ Prexies remained in commercial use for several more years, so this exhibit contains usages as late as 1958. Except for one of the two covers on the epilogue page, examples of rates that first came into effect in 1958 or later are not included.

Coil and booklet 1¢ Prexie usages are identified as such in write-ups; otherwise, 1¢ Prexie usages are of sheet stamps. Year dates of usages are indicated whenever they can be determined by postal or nonpostal markings, dated contents, docketing, or other such evidence. Precancellations are described as either Bureau (applied by the Bureau of Engraving and Printing at the time of production) or local (applied by local post offices).

## Organization:

Title Page  
Domestic Surface Mail  
Domestic Air Mail  
Foreign Surface Mail  
Foreign Air Mail  
Miscellaneous Usages  
Epilogue Page