



It's Dues Time Again! • Your Vote Counts • ROPEX 2010 is History Stamp Camp USA Celebrates 15 Years • Philatelic Finds at ROPEX What Price Perfection? • The "Other" Big Show • Upcoming Area Shows • New US Stamp Releases Next RPA Meetings • Contact Us Outstanding New Issues • Rochester Industrial Expositions Copyright 2010, Rochester Philatelic Association, Inc

The Rochester Philatelic Association, PO Box 10206 Brighton Station, Rochester, NY 14610 <http://www.rpastamps.org>

## It's Dues Time Again!

You've heard the old adage, "*Don't put off tomorrow what you can do today.*" Well, take that saying to heart and pay your 2010-11 RPA dues now! Bring your \$20 check made payable to "RPA" to one of the two June meetings, or send it in the mail to our PO box.

## Your Vote Counts

All RPA members in good standing should have received an election ballot in the mail late May for the 2010-2013 Board seat. While uncontested, everyone is still encouraged to participate and cast your vote either in person at an RPA meeting or by mail.

## ROPEX 2010 is History

Thanks to all RPA members who assisted in so many way to pull off another ROPEX.

Congratulations to our exhibiting members:

### Vermeil

- **Robert P. Meegan** - United States Domestic Letter Rates, 1800 to 1900
- **Alan Parsons** - Corning, NY Postal History Including DPS Now Service by the Corning Post Office

### Silver

- **Alan Parsons** - The Sullivan Commemorative of 1929
- **Alan Parsons** - 19th Century Railroad Postal Markings Related to Steuben, Schuyler, Chemung and Tioga Counties, NY

- **Eleanor A. Steeb** - Everybody Must Get Stoned (but not Bob Dylan's version)
- **Raymond M. Stone** - The 5.9¢ Bicycle
- **Raymond M. Stone** - The 13.2¢ Coal Car
- **Stephen L. Suffet** - Rates and Usages of the United States One Cent Liberty Series Stamp: 1954-1966

### Silver Bronze

- **John Lighthouse** - U.S. Revenue Stamps - First Issue: "Using Commerce to Fund the Civil War"



Major award winners included:

### Grand:

**Harlan F. Stone** - Switzerland's Domestic and International Postal Services During July 1, 1862 - November 30, 1891

### Reserve Grand:

**Gregory Shoults** - Washington and Franklin Coils Rotary Press Issues 1914-1922

### Single Frame Grand:

**Robert L. Markovits** - The 7¢ Stanton Entires 1871-1875

**Larry R. Moriarty Sr. Memorial Award** - R. Moriarty Sr. Memorial Award - For a Thematic, Display, Revenue or Illustrated Mail Exhibit  
**Dr. Edwin J Andrews** - Paul von Lettow-Vorbeck: The Events and Times that Molded the Man

**Andy Hale Award** - Excellence in a Non-Postal History Exhibit by a RPA Member  
**Alan Parsons** - The Sullivan Commemorative of 1929

**Dusty Miller Award** - Excellence in a Postal History Exhibit by a RPA Member  
**Robert P. Meegan** - United States Domestic Letter Rates, 1800 to 1900

**LRM Popularity Award** - Most Popular as Voted by ROPEX Attendees  
**Lorah Wilson** (age 14) - Animals Around the World



Harry Tong's stand during a quiet time



Nice wide aisles between exhibit rows



RPA members and ACE meeting attendees (front: George Hill, Diane Bombard, Joe Doles; back: Dave Bombard, Ada Prill, Rick Kase)

### **Stamp Camp USA Celebrates 15 Years**

RPA members have followed the philatelic youth outreach efforts of Cheryl Edgcomb over 30+ years from her work beginning with the USPS Ben Franklin Stamp Clubs and Junior Philatelist of America.

It's hard to believe that her most recent labor of love, Stamp Camp USA, has now been around for 15 years. The organization held a stamp collecting "pool party" in its honor on Saturday, May 22 at headquarters in Elkland, PA attended by some 100 people.



Above, Cheryl is accepting a copy of the proclamation honoring Stamp Camp's achievements read into the U.S. Congressional Record a few days earlier.



Here are some happy youngsters indulging in the centerpiece of the event—the pool! Upwards of a million donated stamps filled it about 2/3 of the way. Those stamps will be used in Stamp Camp’s many projects, locally and nationally.



Cheryl’s 30 frame exhibit on rainbows was on display and certified by Guinness as the world’s largest such collection. Congrats!

Stamp and monetary donations to Stamp Camp are fully tax deductible. Visit their web site for more information at <http://www.stampcampusa.org> or write to: 117 Court Street Suite A, Elkland, PA 16920

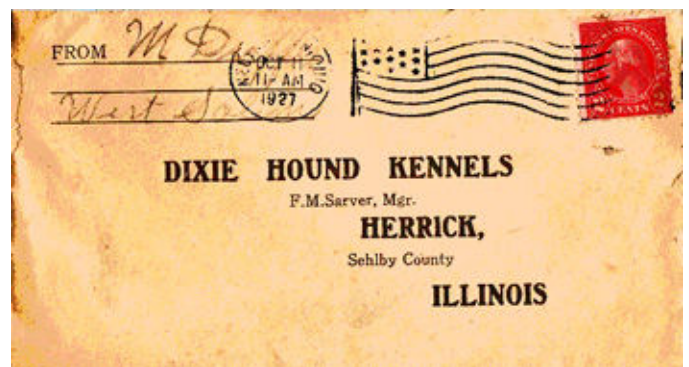
### Philatelic Finds at ROPEX

Charlie Adrion has written the following article about his best finds at this year’s show.

I found 16 flag cancels for my collection at ROPEX this year. Here are two highlights.



Saint Francis, Kansas is on the list of scarce flag cancels. It was unknown for many years until one was discovered in 1966. I have never seen on offered before.



This second Ohio cancel I have not figured out yet. I've sent a scan to the flag cancel society editor to get an opinion. There is no known flag cancel from West Salem, Ohio. It appears that the first and last letters of the town name are "N"s. The only Ohio town that used flag cancels in 1927 with "N"s is Newcomerstown (the hometown of Cy Young) - but that doesn't appear to match very well. New London is nearby to West Salem but they stopped using their flag cancel in 1923.

The research continues on this one. Yes, they misspelled Shelby County on the envelope (Sehlby).

Both these covers were bought for modest amounts at ROPEX dealers. Both came from the same original correspondence - a dog kennel in Illinois. Both have enclosures that corroborate the postmark dates. Both look like they were kept in a barrel in the barn out back for 75 years - not exactly exhibition quality. Both are new treasures for me.

## What Price Perfection?

I guess we can really blame this all on our fellow collecting cousins for starting the whole trend of grading collectibles. Depending on who you ask, grading was created to either tap into, or artificially create, a market for those with deep pockets and tend to acquire only the best.

Two coin companies in the mid-1980s began grading coins as a third-party guarantor of their quality, Professional Coin Grading Service (PCGS) of Newport Beach, California and Numismatic Guaranty Corporation (NGC) of Parsippany, New Jersey. Once graded coins were encapsulated to seal their condition.

Yes, that's \$1595 for four 2009 Lincoln pennies! Circulating coins must be received by NGC by the official release date or the day after the official release date to qualify. These are in MS67.

**Only 96 NGC Collections Exist in the World**  
**The 2009 Complete Lincoln Cent First Day of Issue Registry Set** RARE

Only 12 sets remain out of 96 slabbled by NGC.

- Log Cabin MS67 Red (Pop of 96)
- Rail Spiller MS67 Red
- Professional Life MS67 Red
- Presidency MS67 Red

**\$1595 per set**  
 (10 pay of \$160)

In 1991 Professional Sports Authenticator (PSA) began marketing a similar service and grading scale of their own for collectible cards. It was not by chance that the card below was the first they graded.



The world's most expensive baseball card, the Gretzky 1909 T206 Honus Wagner card sold for \$2.8 million in September, 2007, only received a grade of 8 out of 10 on the PSA grade scale. (Yes, it was named after that Gretzky who once owned the card.)

Rare cards like this one were naturals to get such servicing. However more common cards in pristine condition could also attain jaw-dropping prices.

Fast forward to our own hobby. The Professional Stamp Experts (PSG) Grading System considers the appeal of two components: The first is the soundness of the stamp (faults or lack thereof) and the second is its centering. Their scale is even more exacting than that used by coin and card counterparts, scoring on a 100 point system. Let's take a look at an example.



Here is as perfect a stamp as possible under PSG standards. This is Scott #1029, a mint never hinged stamp with a 3 cent face value and 2008 catalogue value of 20 cents. How much would you pay for this "perfect" stamp? Someone paid \$125 for this one on eBay.

There is a market for slabbled stamps and for that matter, perfectionist collectibles of all kinds. Speculators, investors and self-proclaimed connoisseurs have jumped on the bandwagon along with a lucky few who had the items to begin with.

**Are slabbled stamps a fad? Will their bubble burst? Or are they here to stay?**

## The “Other” Big Show



ROPEX wasn't the only other major stamp show happening in mid-May, and we're not referring to ROMPEX in Denver, which also happens to have the same dates as us!

Great Britain's once-a-decade international philatelic extravaganza was taking place May 8-15 in London, England 3,500 miles away.

London 2010 had plenty of obstacles in pulling it off, especially with only minimal financial support from Royal Mail, their postal service. Like ROPEX, it's not easy finding a building large enough and affordable for all needs. The expo needed to accommodate 150 dealer stands as well as over 2,500 exhibit frames.



The show's venue was the Business Design centre in the northeast suburb of Islington. It was a short 10 minute walk from the underground Angel “Tube” station, making it accessible to all parts of the city with ease. The facility has regularly hosted other stamp shows in the past, but not one of this size. In fact, organizers realized early on it would not be big enough to house everything.

So it was decided to try something bold. Only half the exhibits would be shown at a time, necessitating a complete dismantling and re-mounting after the first four days of the show. Quite simply, the concept worked flawlessly.



Admission was free except for opening day when a £10 fee was charged, around \$15. Daily attendance was estimated at 5,000 by the show committee. RPA members Jack Rosenstein and Tom Fortunato were among them.

Among the highlights of the show was a display featuring the Swedish 3 skilling color error, the world's most expensive stamp. It was scheduled to be auctioned off just a week later, presumably setting another record price.

---

### Upcoming Area Shows

Jun 27 **Rochester** RS Stamp Show  
Eagles Club, 1200 Buffalo Rd (Route 33).  
Hours: 10-4. Bourse.  
Contact: John Nunes, (518)399-8395  
Email: [Nunesnook@aol.com](mailto:Nunesnook@aol.com)

Aug 29 **Rochester** RS Stamp Show  
Eagles Club, 1200 Buffalo Rd (Route 33).  
Hours: 10-4. Bourse.  
Contact: John Nunes, (518)399-8395  
Email: [Nunesnook@aol.com](mailto:Nunesnook@aol.com)

Sep 12 **Syracuse** Syracuse Stamp, Coin &  
Collectibles Show  
Holiday Inn- Carrier Circle, exit 35. Hours: 10-  
5. Bourse.  
Contact: Ed Bailey, (315)452-0593.

A complete listing of shows can be found at:  
<http://www.rpastamps.org/rpa-stampshowcalendar.html>

## New US Stamp Releases



June 22 - 44¢ Oscar Micheaux

Mid-July - 44¢ Negro League Baseball, 2 designs

July 16 - 44¢ Sunday Funnies set of 5

July 27 - 44¢ Scouting

August 12- 44¢ Winslow Homer

## Next RPA Meetings

Thursday, [June 10](#).....Annual Business Meeting

Thursday, [June 24](#).....Strawberries Night

Thursday, [September 9](#).....Welcome Back!

## Contact Us

### President

Dave Bombard - 585-352-6955  
dbombar1@rochester.rr.com

### Vice President and Program Chair

Joe Doles - 585-621-3012  
jdoles@rochester.rr.com

### Corresponding Secretary/H&T Editor

Tom Fortunato - 585-225-6822  
stampmf@frontiernet.net

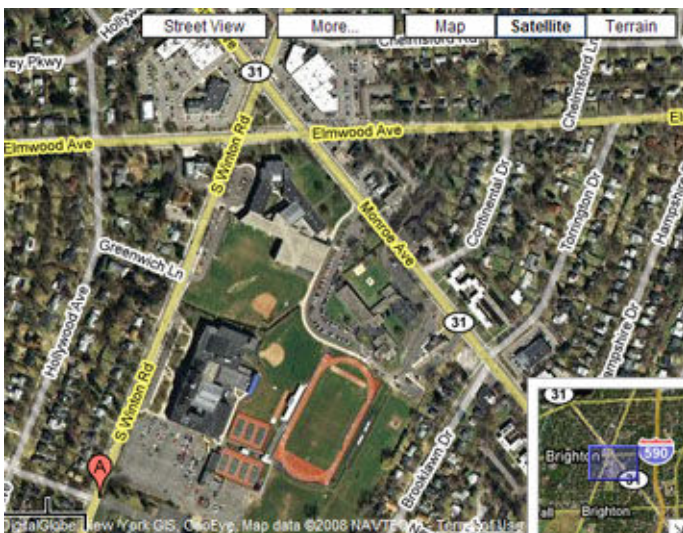
## Outstanding New Issues



Yes, that's an "ice cream on a stick" issued October 2, 2009 in Portugal. But the real surprise is the vanilla flavored gum you taste when you lick it. Enjoy your summer!

**The Rochester Philatelic Association**  
**PO Box 10206 Brighton Station**  
**Rochester, NY 14610-0206**

RPA Meetings are at Twelve Corners Presbyterian Church  
1200 Winton Rd South, just south of Brighton High School



Do any members out there have a collection of or knowledge about the Rochester Industrial Expositions held for many years at the turn of the twentieth century? I would like to feature an article about them in an upcoming H&T issue. Tom F.

